

How to Assemble LMATV-250HM?

Open the box and take out all the parts

Place packing box on the flat ground, then open it with the scissors or cutter.

Use 10# open-end wrench and 6# Allen wrench to apart the packing metal.

Remove all the packages, including fix screws, bubbles poly bag, steel wires, plastic tapes and films.

Assembling guide

1st step: Install steering linkages.

Unscrew the screw on the steering linkages' bolt, plug it in the holder, then tighten the screw. Both sides are same.



2nd step: Install rear mufflers.

1. Take out the mufflers.



2. Unscrew the screws on the mufflers, install each muffler on the holder at the rear exhaust pipe as below.



There is a paper spacer between the muffler and the holder when install, if the paper spacer was broken, replace

a new one, there is a pair of spare paper spacer in the tool box.

3. Fix the muffler on the frame rack as below.

Left side:



Right side:



3rd step: Install the front tires (make the tread pattern and cycle valve outside).

Unscrew the screws on the front wheel, put on the tire, then tighten the screws. Both sides are same.



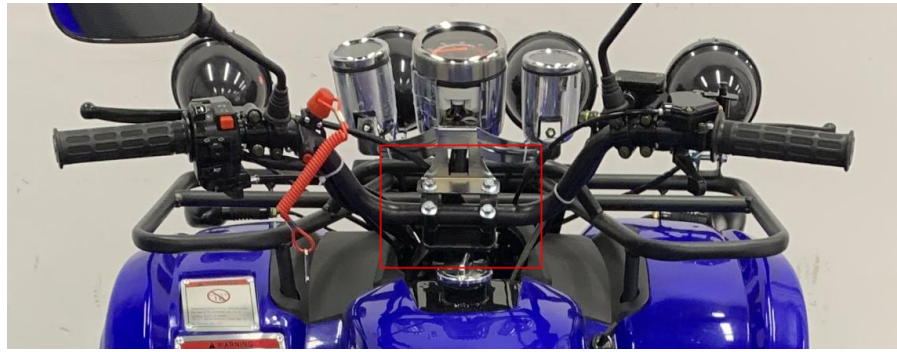
4th step: Install the rear tires (make the tread pattern and cycle valve outside).

Unscrew the screw on the rear wheel linkage, put on the tire, then tighten the screw. Both sides are same.



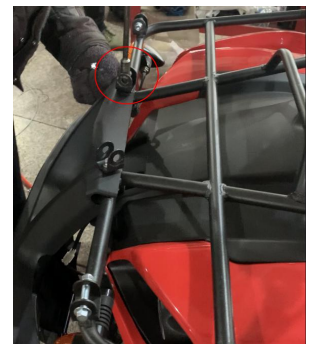
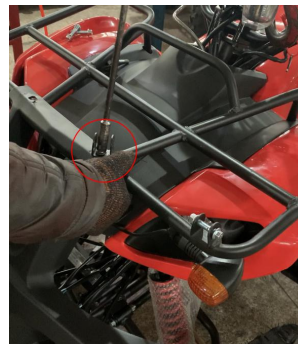
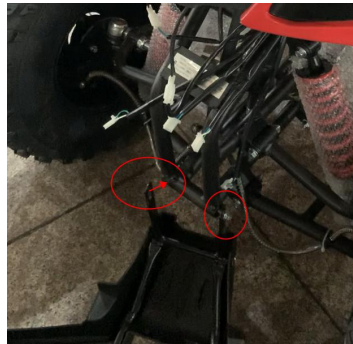
5th step: Install handlebar (adjust to proper angles).

Find out below part , put them on the handle bar, fix the display and handle bar, then tighten the screws.



6th step: Install the front protector.

Unscrew below two screws, put on the front protector, then tighten all the screws (4pcs).



7th step: Install the front lights.

Find out the four front lights, and fix them as below photo.



The front part looks like as left photo.

8th step: Install the rear rack.

Tighten below two screws for both sides to fix the rear rack.



The side part looks like as below photo.



9th step: Connect the front light and rear light cables.

Important Note:

When you connect electric cables, electric lock is always in the state of "OFF".

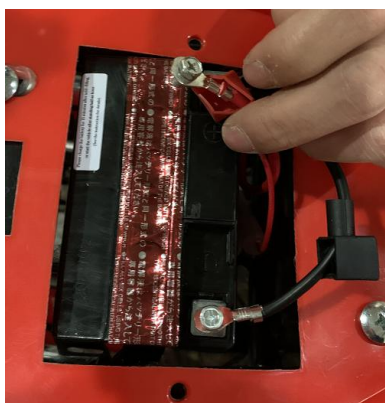
There are some white slim tape inside the tool box, you can use them to fix the cables if necessary, make sure the electric cables not touch the mufflers to avoid damage.

10th step: Install the battery.

There is a separate manual for the battery, please read carefully before use.

Important Note:

When you connect battery cables, electric lock is in the state of "OFF". Positive first, then negative.



11th step: Install the seat.



Make sure the rear buckle was fixed correctly.

Disassemble is opposite.